

TECHNICAL DATA SHEET

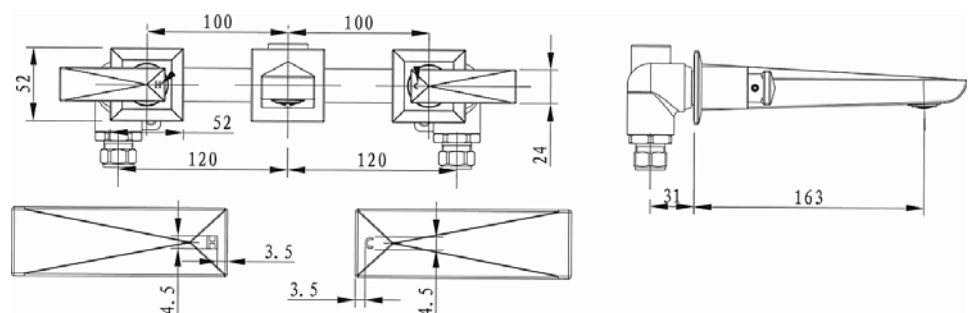
BRISTAN

Ebony

Ebony 3 Hole Wall Mounted Basin Mixer

Product Specification

Product Code:	EBY 3HWMBAS C
Finish:	Chrome plated
Product Type:	Traditional
Construction:	Bodies are of all brass construction and are designed to conform to BS EN 200
Valve Type:	¼ Turn ½" Ceramic Disc
Supply:	Suitable for all plumbing systems
Inlet Connections:	15mm Compression
Working Pressures:	Min 0.2 Bar Max 5.0 Bar



Additional Information

- Supplied with metal handles
- Chrome plated to BS EN 248.

Technical Advice: For further information please call 0844 7016273 or email customer care@bristan.com.

Guarantee: 5 years covering manufacturing faults.

Flow Rates (litres per minute)

System Pressure	0.2bar	0.3bar	0.4bar	0.5bar	1.0bar	2.0bar	3.0bar	5.0bar
EBY 3HWMBAS C (Hot)	6.5	8.2	9.5	10.8	15.9	22.4	27.1	35.0
EBY 3HWMBAS C (Cold)	5.8	6.9	8.1	9.3	13.2	19.5	24.2	31.2
EBY 3HWMBAS C (Mixed)	8.5	11.1	12.6	15.0	22.5	34.4	42.1	54.3